

Acceso a 1º de enseñanzas profesionales Mod. 1

RITMO

♩ = 50

5

♩ = ♩.

3

3

♩ = ♩.

2

Detailed description: This section contains four staves of music for a rhythm exercise. The first staff is in 3/4 time with a tempo of ♩ = 50. It features a sequence of eighth and sixteenth notes, including a quintuplet of eighth notes. The second staff continues with triplet eighth notes and a change to 6/8 time. The third staff is in 6/8 time with a tempo of ♩ = ♩. and includes a pair of eighth notes. The fourth staff is in bass clef, continuing the rhythmic patterns.

ENTONACIÓN

♩ = 50

mf

Detailed description: This section contains three staves of music for an intonation exercise. The first staff is in 6/8 time with a tempo of ♩ = 50 and a dynamic marking of *mf*. It features a melodic line with a slur over the first four measures. The second and third staves continue the melodic line across eight measures, also using slurs to indicate phrasing.

Acceso a 1º de enseñanzas profesionales Mod. 2

RITMO

♩ = 50

5

♩ = ♩.

♩ = ♩.

2

♩ = ♩.

Detailed description: This section contains four staves of music. The first staff is in 3/4 time with a tempo marking of ♩ = 50. It features a sequence of eighth and sixteenth notes, including a quintuplet (marked '5') and a triplet (marked '3'). The second staff continues with triplets and a repeat sign. The third staff is in 6/8 time with a tempo marking of ♩ = ♩., featuring eighth and sixteenth notes and a pair of eighth notes (marked '2'). The fourth staff is in bass clef with a tempo marking of ♩ = ♩., featuring eighth and sixteenth notes.

ENTONACIÓN

♩. = 50

mf

Detailed description: This section contains three staves of music. The first staff is in treble clef with a key signature of one flat and a common time signature (C). It has a tempo marking of ♩. = 50 and a dynamic marking of *mf*. The music consists of eighth notes with long slurs. The second and third staves continue the melodic line with similar eighth-note patterns and slurs.

Acceso a 1º de enseñanzas profesionales Mod. 3

RITMO

♩ = 50

5

3

3

♩ = ♩.

♩ = ♩.

2

Detailed description: This section contains four staves of music. The first staff is in 3/4 time with a tempo marking of ♩ = 50. It features a sequence of eighth and sixteenth notes, including a quintuplet of eighth notes. The second staff continues with eighth notes and includes two triplet markings. The third staff is in 6/8 time with a tempo marking of ♩ = ♩. It contains eighth and sixteenth notes, ending with a double bar line and a '2' below it. The fourth staff is in bass clef with a tempo marking of ♩ = ♩. It features eighth and sixteenth notes.

ENTONACIÓN

♩ = 50

mf

Detailed description: This section contains three staves of music in treble clef with a key signature of two sharps (F# and C#) and a common time signature (C). The tempo marking is ♩ = 50. The first staff begins with a dynamic marking of *mf* and features a long slur over the first six notes. The second and third staves continue the melodic line with similar slurs, ending with a double bar line.

Dictados para prueba de acceso a 1º de EE.PP.

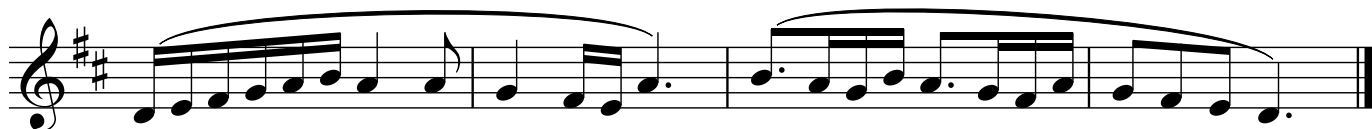
Sol M



Fa M



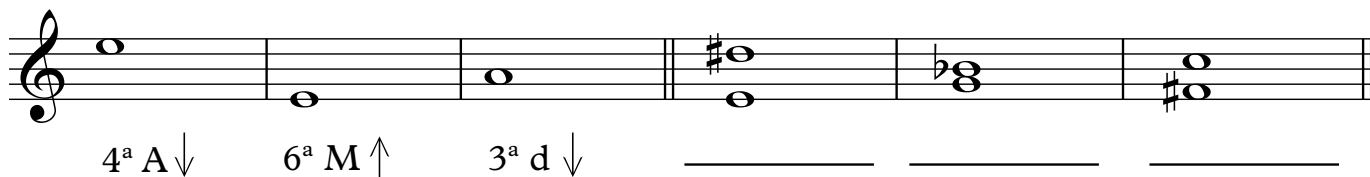
Re M



TEORÍA acceso a 1º de Enseñanzas Profesionales

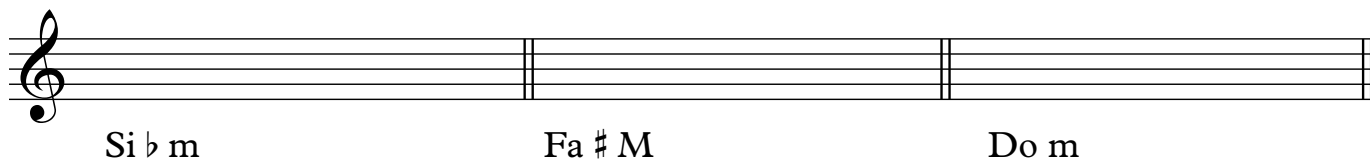
1. REALIZA

2. DI EL INTERVALO



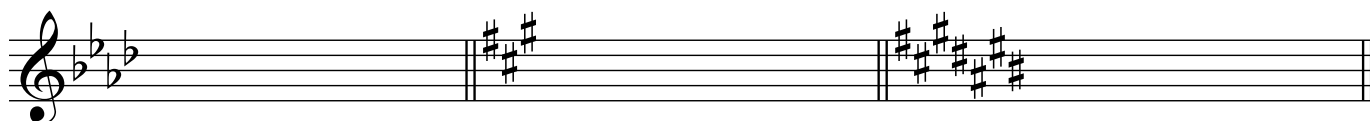
A musical staff in treble clef showing three intervals. The first interval is a 4th descending (A4 to A3), labeled "4ª A ↓". The second is a 6th ascending (A3 to F#4), labeled "6ª M ↑". The third is a 3rd descending (A3 to G2), labeled "3ª d ↓". To the right, there are three blank staves for identifying intervals.

3. PON LA ARMADURA



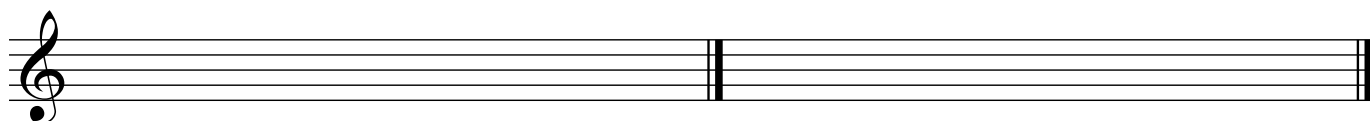
A musical staff in treble clef with three key signature changes. The first is Si b m (B-flat minor), the second is Fa # M (F# major), and the third is Do m (C minor).

4. DI LAS DOS TONALIDADES

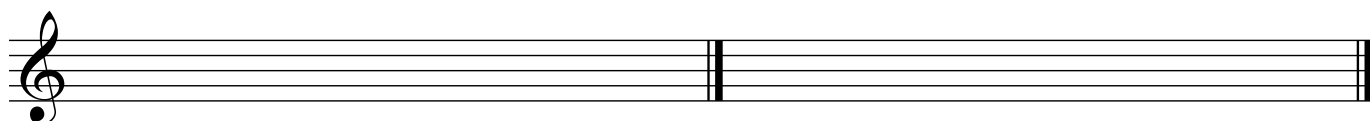


A musical staff in treble clef showing three key signatures: B-flat minor (Si b m), F# major (Fa # M), and C minor (Do m).

5. HAZ LOS CUATRO TIPOS DE ESCALA DE SOL # menor



A musical staff in treble clef with a double bar line, intended for writing the four types of scales for G# minor.



A second musical staff in treble clef with a double bar line, intended for writing the four types of scales for G# minor.